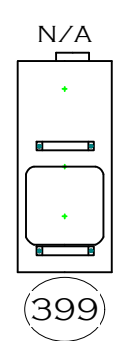
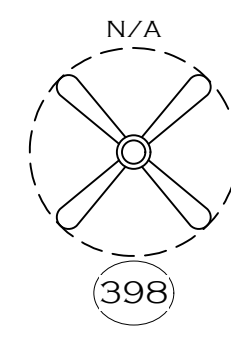


**EFFECTS**

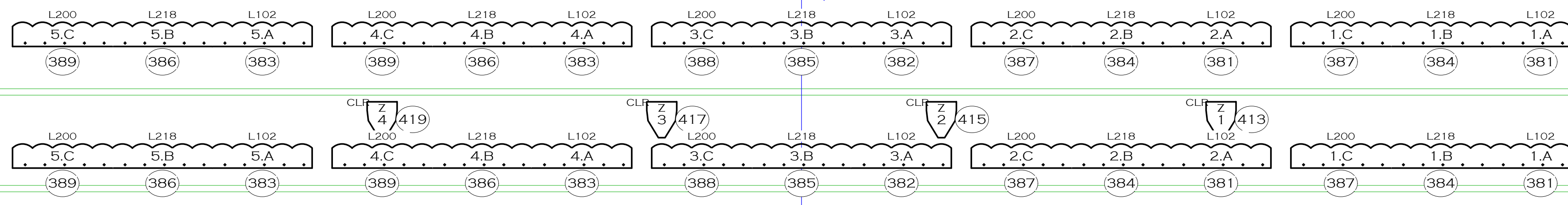


-DISCUSS PLACEMENT



-IN BOX TO BLOW DRAPE.  
-DISCUSS TYPE AND PLACEMENT.

**G'ROWS AND US FLOOR:**  
-BREAST BOUNCE US AS FAR AS POSSIBLE  
-EXACT POSITION OF GROUND ROW TBD PRIOR TO FOCUS



**G'ROW HI**  
NOT IN TRUE POSITION  
TO BE PLACED ABOVE GR LO

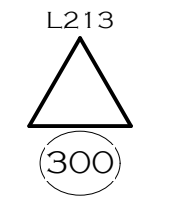
**G'ROW LO**

**SR WAGON**



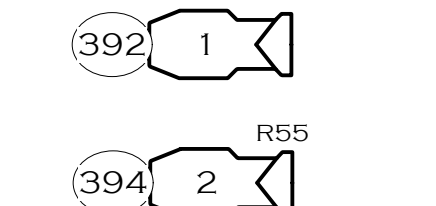
JOHNNY WALKER  
LAMP - MUST TRAVEL  
AND WORK WITH  
WAGON.  
100W A-BASE LAMP -  
GEL TBD

**REFRIDGERATOR**

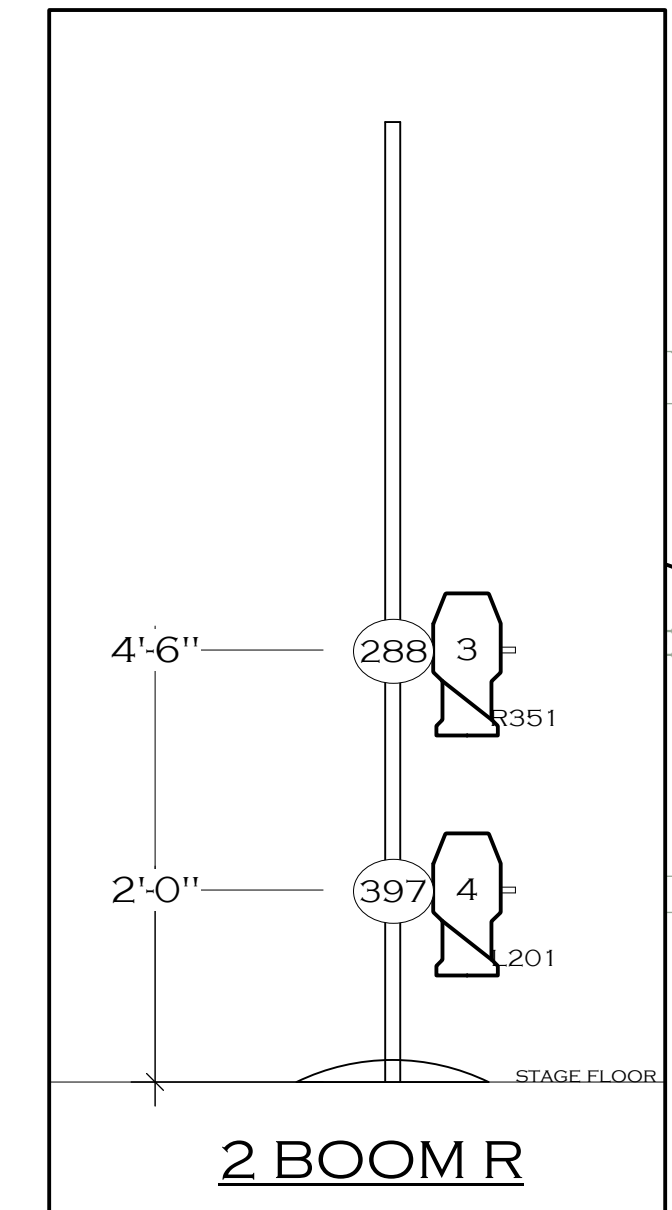
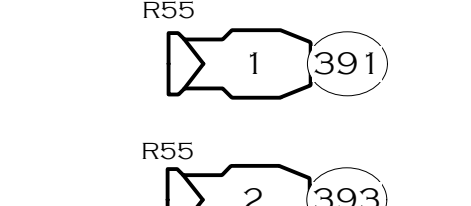


-PLEASE PROVIDE ADEQUATE CABLE  
ENTERS FROM US  
-WILL HAVE SMOKE

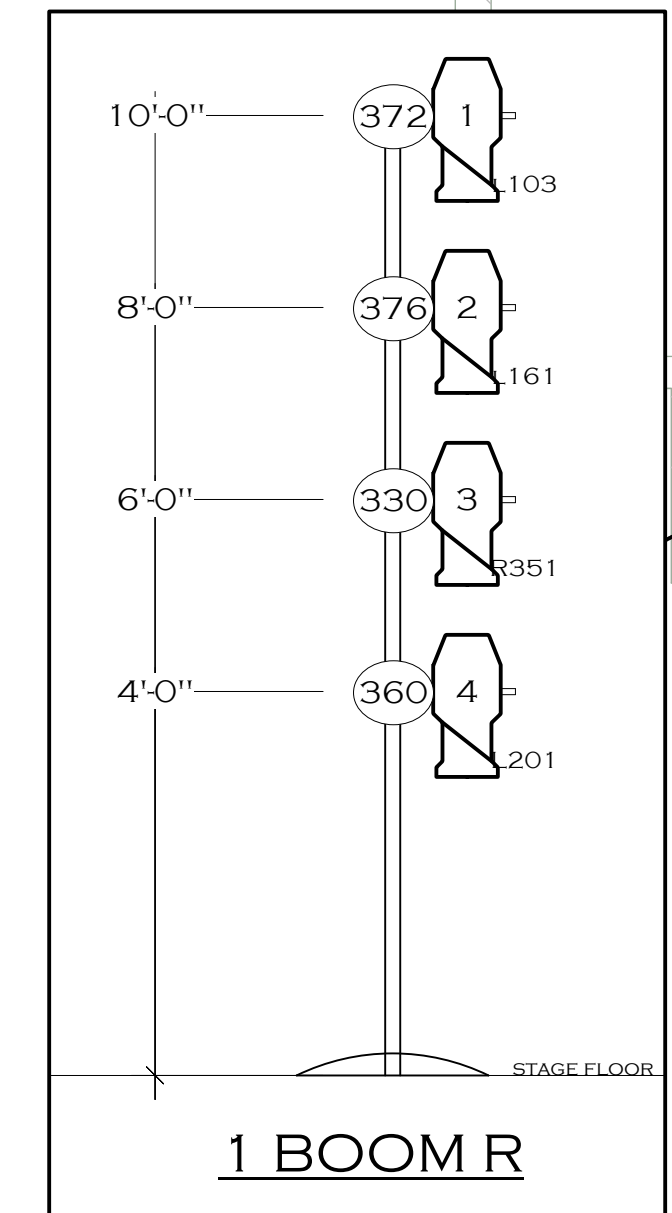
**UNDER BRG R**



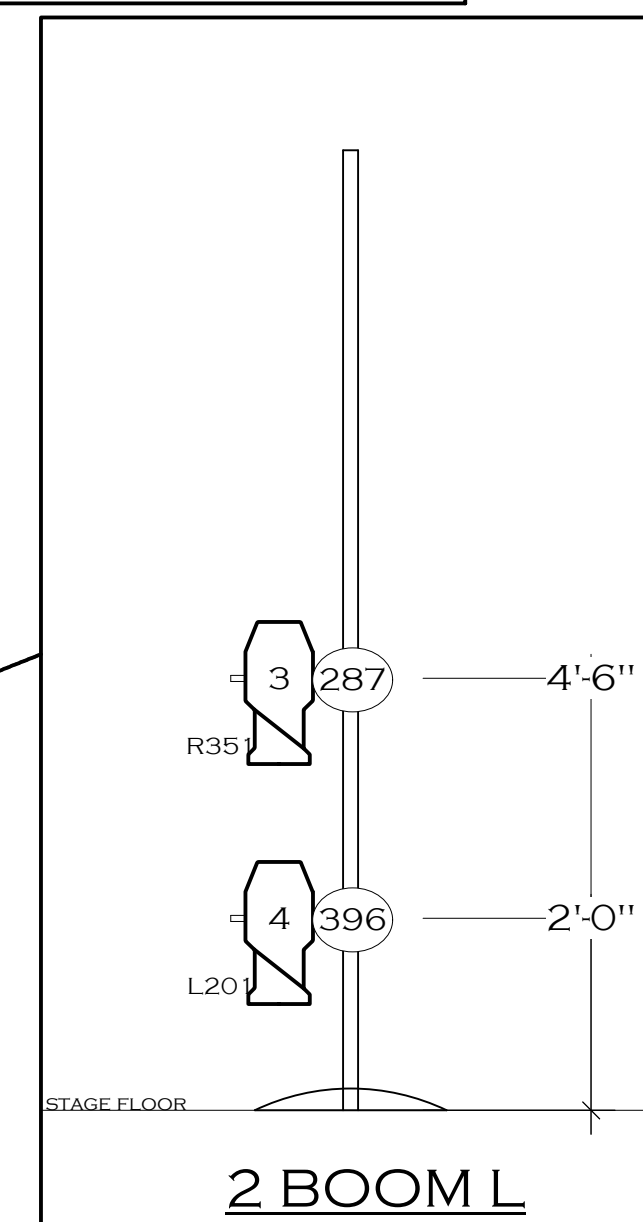
**UNDER BRG L**



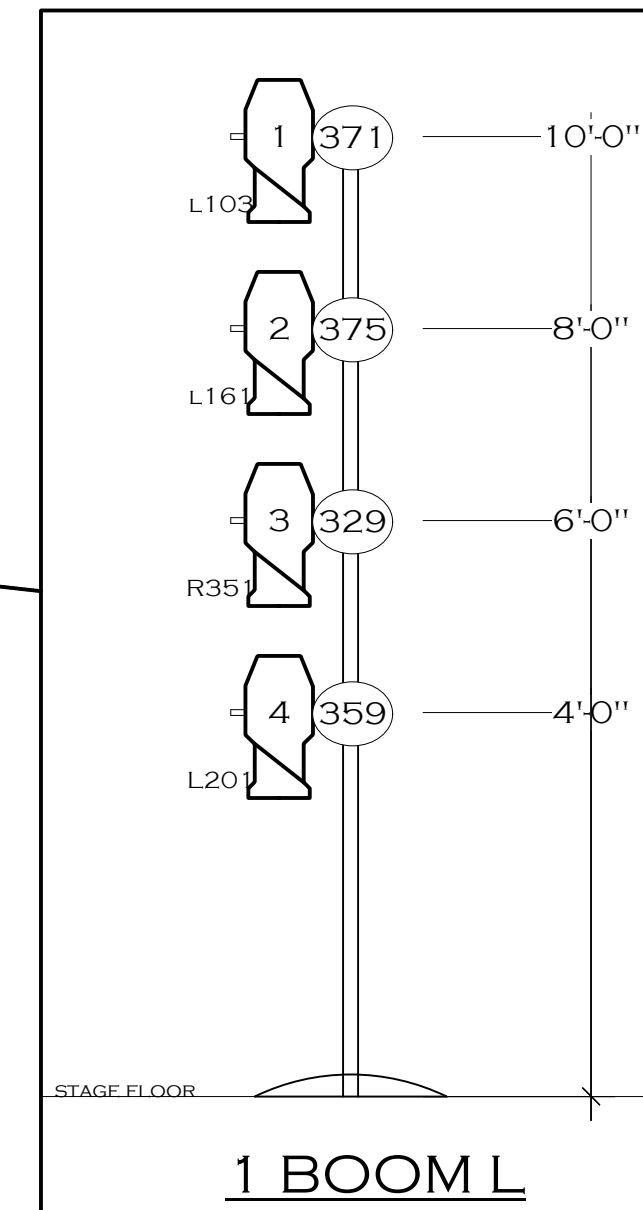
**2 BOOM R**



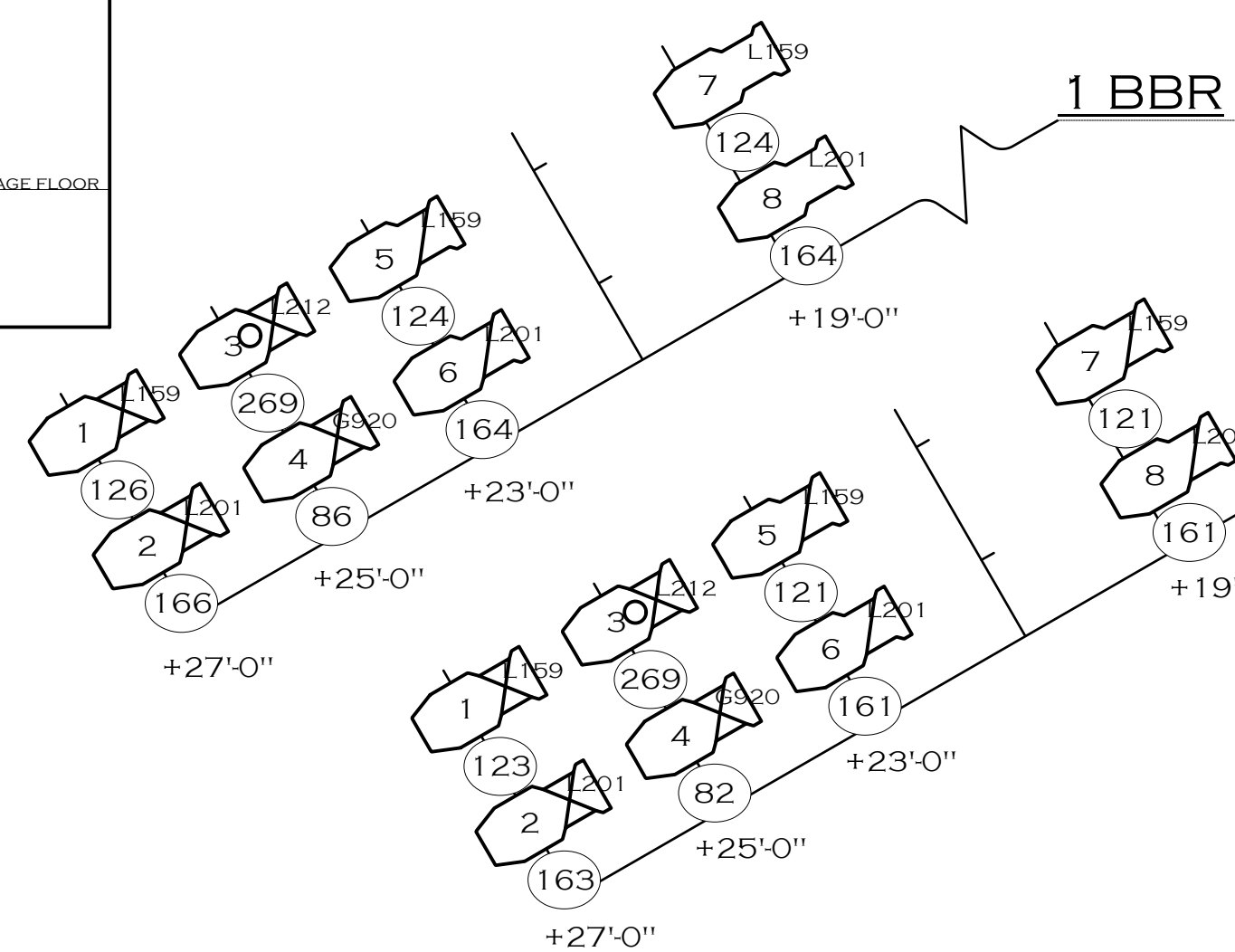
**1 BOOM R**



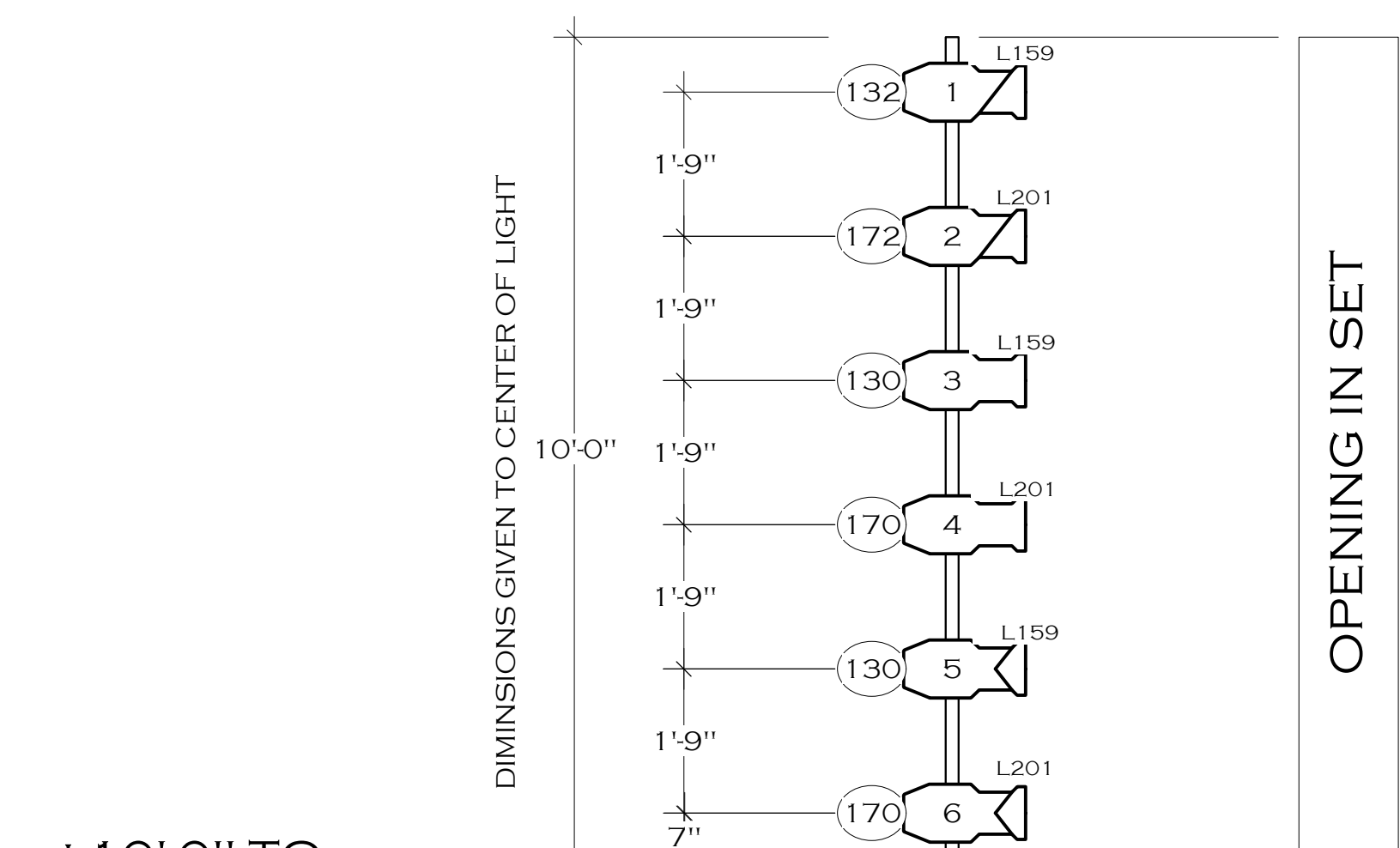
**2 BOOM L**



**1 BOOM L**

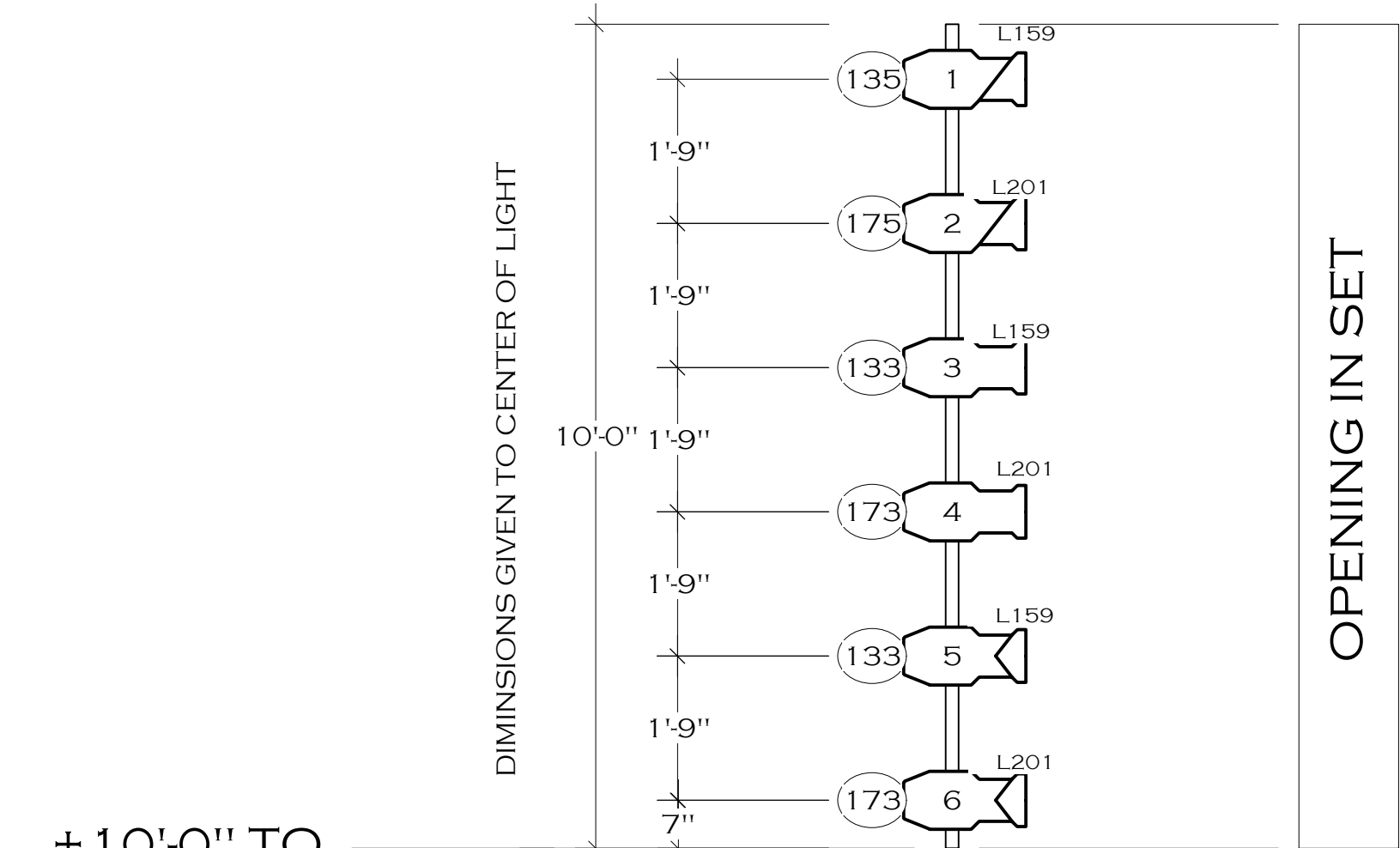


**SR SLOTS**



**1 SLOT R**

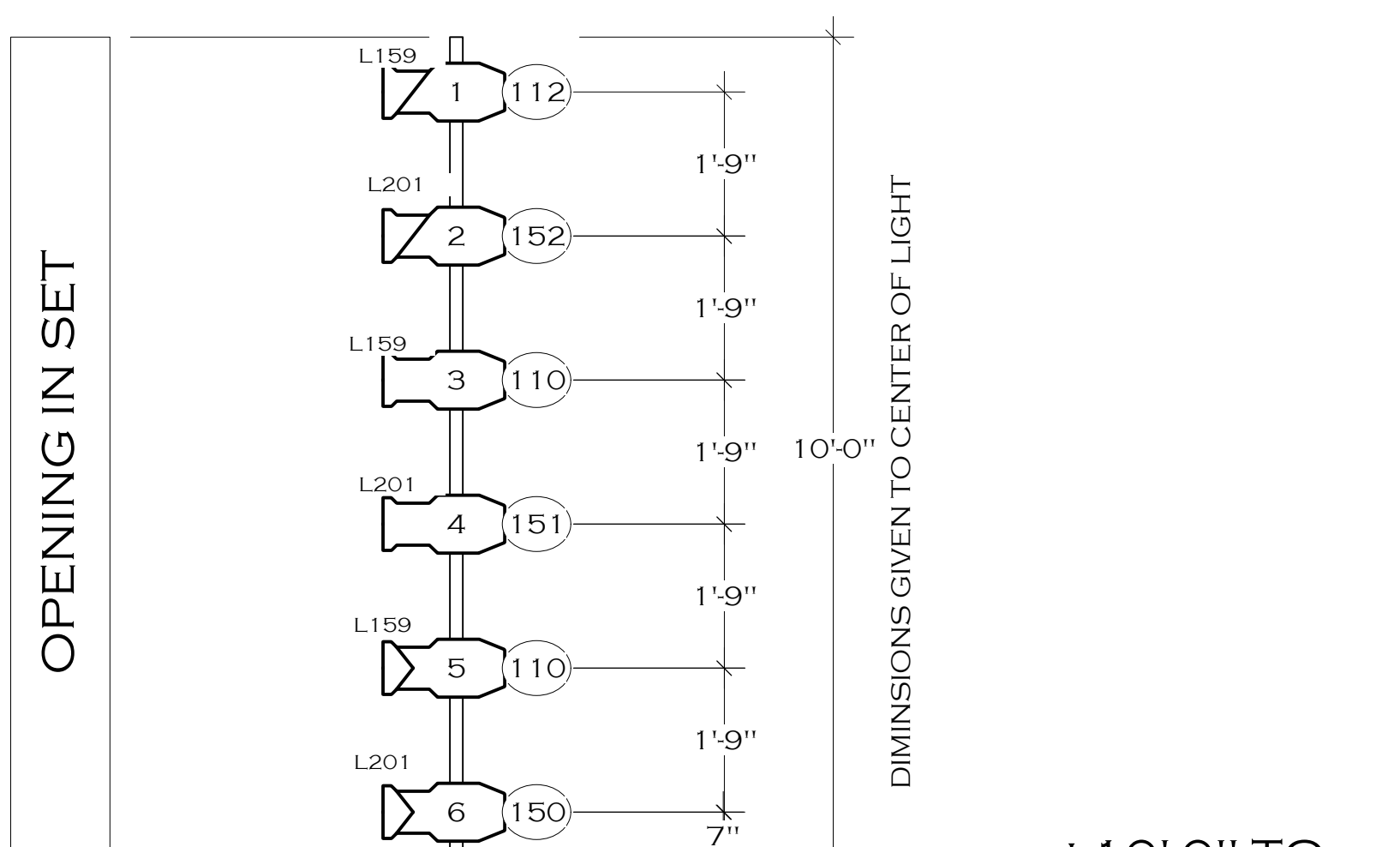
+10'-0" TO SHOW DECK



**2 SLOT R**

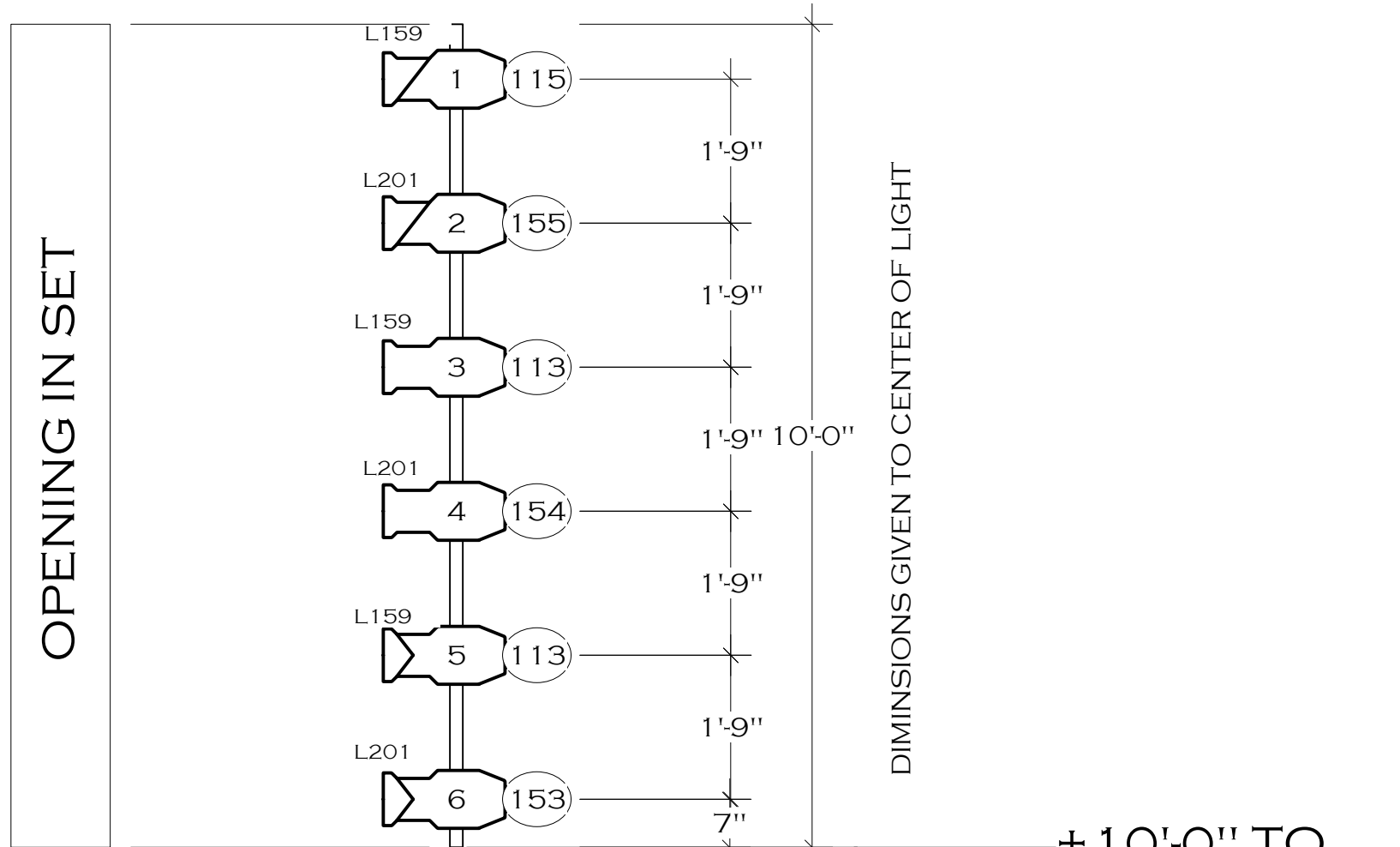
+10'-0" TO SHOW DECK

**SL SLOTS**



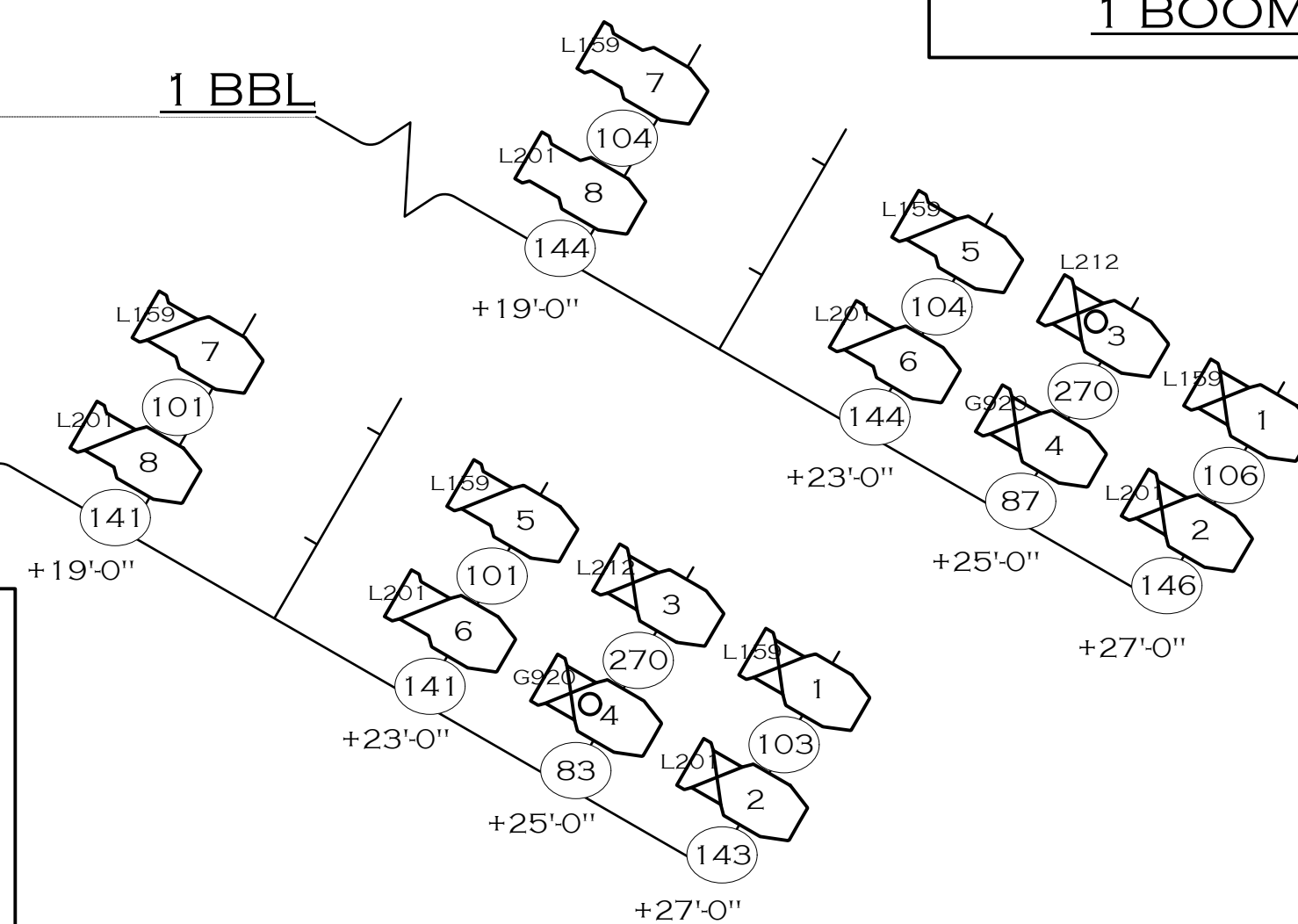
**1 SLOT L**

+10'-0" TO SHOW DECK



**2 SLOT L**

+10'-0" TO SHOW DECK



**LEGEND**

	S/4 19DEG		ALTMAN 6X12
	S/4 26DEG		PAR 64 NSP
	S/4 36DEG		PAR 64 MFL
	S/4 50DEG		PAR 64 WFL
	ALTMAN 6X16		STROBE CANNON
	PRACTICAL		JR STROBE
	PAR 16		3" FRESNEL
	LEMATRE G300		FAN
	ALTMAN 3-CELL SKY CYC		3-C ALTMAN ECONOSTRIP

**TYPICAL UNIT**

- NOTES**
- ALL UNITS HUNG ON 18" CENTERS UNLESS OTHERWISE INDICATED.
  - PLEASE DROP ALL COLOR AND ACCESSORIES PRIOR TO FOCUS.
  - ALL NON-TEMPLATED LEKOS TO INCLUDE A CUT OF R132.
  - PLEASE PROVIDE EXTRA CUTS OF R132, R119 AND R114 AT FOCUS.
  - PLEASE PROVIDE BLACK WRAP AND BLACK TACK AT FOCUS.
  - ALL TRIMS TAKEN FROM THE CENTER OF THE ELECTRICS.

DATE	REVISION	BY
8/18/08	UPDATES AND EDITS	CD
8/19/08	ADDED COLOR AND COMPLETED SECTION	CD
9/2/08	CUTS AND TWO'ERS	CD

THIS LIGHT PLOT REPRESENTS VISUAL IDEAS AND DESIGN CONCEPTS ONLY. DESIGNER IS UNQUALIFIED TO DETERMINE STRUCTURAL APPROPRIATENESS OF THE DESIGN. EXECUTION OF THIS DESIGN MUST COMPLY WITH ALL SAFETY AND FIRE CODES.

THE STEPPENWOLF THEATRE COMPANY  
PRESENTS  
**KAFKA ON THE SHORE**  
BY  
FRANK GALATI  
**LIGHT PLOT**

LIGHTING DESIGNED BY JAMES F. INGALLS (212) 260-5268 ESTVLBR@AOL.COM	PLATE <b>2</b> OF 3
DIRECTED BY FRANK GALATI	
SCENIC DESIGN BY JAMES SCHUETTE	
SCALE: 1/2" = 1'-0" DATE: AUGUST 12, 2008	
DRAWN BY: CASEY DIERS - 402-720-0476 ADMIN@CASEYDIERS.COM	